



**PRESCHOOL  
THROUGH  
GRADE 12**

— A TAILORED-FIT APPROACH TO —  
EDUCATION WITH CHRIST AT THE CENTER

# DISCOVERING LAKEWOOD

**YOUR COMPLETE GUIDE TO OUR SCHOOL**



**LAKWOOD PARK**  
CHRISTIAN SCHOOL



## AS YOU CONSIDER THE BEST EDUCATIONAL PATH FOR YOUR CHILD, YOU MAY FIND YOURSELF ASKING:

*DOES THIS SCHOOL ALIGN WITH OUR FAMILY'S VALUES?*

*IS THE ENVIRONMENT SAFE AND NURTURING?*

*HOW DOES THE SCHOOL SUPPORT SPIRITUAL GROWTH ALONGSIDE ACADEMIC RIGOR?*

At Lakewood Park Christian School, we understand these questions are at the heart of your decision. As Head of School, I am privileged to lead a community where these concerns are not only addressed but deeply embedded in our mission. We offer a safe, academically challenging, and spiritually nurturing environment, guided by a shared goal of fostering well-rounded individuals.

Standing on the legacy of those before us, we strive towards a future illuminated by God's vision. This includes a commitment to excellence —evident in our dedication to professional development for teachers, unique learning experiences for students, and ongoing enhancements to our campus.

Choosing LPCS means investing in a Christian education that values the holistic development of your child. Everything we do is infused with prayer, aimed at reflecting God's purpose for our school and your family. We look forward to potentially welcoming you into the LPCS family, where your journey will be embraced with open arms and a supportive heart.

Warmly,

*Dr. Robert Burris*

Head of School



# ROOTED IN VALUES: OUR APPROACH

At Lakewood Park Christian School, we embrace a holistic approach to education, nurturing not only the intellect but also the spirit and social consciousness of each student. Our commitment is to guide your child through a journey that not only prepares them for future academic and career success but also molds them into compassionate Christian leaders.



## ALIGNING OUR PATHS WITH CORE VALUES:

### Academic Excellence

We commit to high educational standards, providing a rigorous curriculum supported by innovative teaching methods and technology. This fosters a culture of excellence where students are encouraged to reach their full academic potential.

### Faith Integration

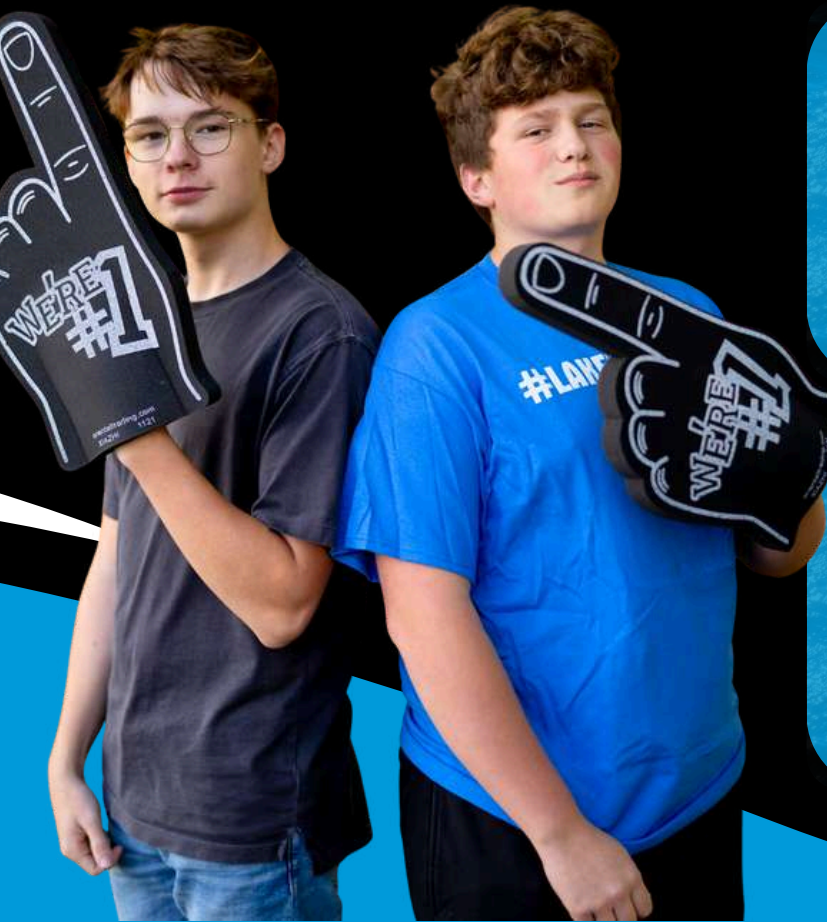
Our education is rooted in Christian faith, integrating biblical truths throughout the learning experience. This approach nurtures students' spiritual growth, guiding them to live lives that reflect their faith in Christ.

### Education Innovation

By embracing innovative educational practices, we prepare students to thrive in a rapidly changing world. Our commitment to creativity, critical thinking, and adaptability ensures that students are not just prepared for the future but poised to shape it.

### Community Partnership

Recognizing the importance of community, we engage families and local organizations in the educational process. Through partnerships, volunteer opportunities, and service projects, we foster a sense of belonging and responsibility among our students.





# LAKEWOOD PARK

## EARLY EDUCATION



Lakewood Park Christian School offers a nurturing and enriching Early Education program for young learners. Focused on sparking curiosity, creativity, and a solid foundation in Christian values, our programs cater to preschool and pre-kindergarten children, providing flexible scheduling to meet the needs of families.

### OUR EDUCATIONAL PHILOSOPHY

Our Early Education programs, rooted in a Christ-centered approach, support children's intellectual, personal, and social growth through play-based learning and STEAM activities. Emphasizing Christian values, we foster curiosity, creativity, moral integrity, and a love for God in every lesson.



**PRE-SCHOOL PROGRAM**  
(AGES 3-4 BY AUGUST 1)



**HALF OR FULL DAY**



**2X, 3X, OR 5X A WEEK**



**PLAY-BASED LEARNING**



**PRE-KINDERGARTEN PROGRAM**  
(AGES 4-5 BY AUGUST 1)



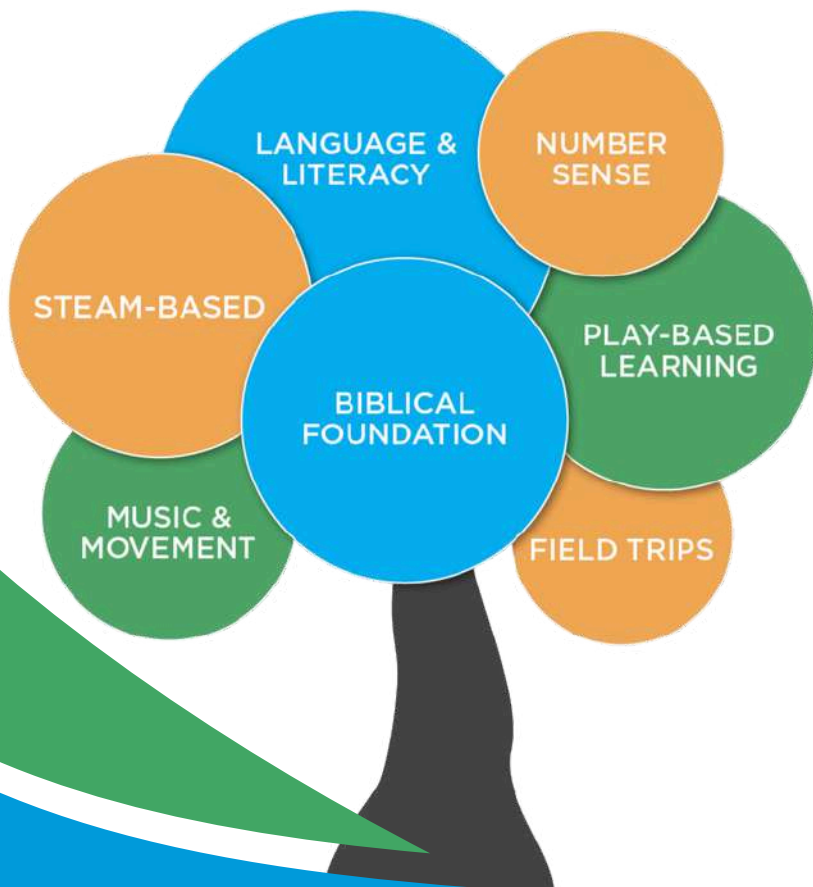
**HALF OR FULL DAY**



**5X A WEEK**



**LITERACY & STEAM FOCUS**



### EARLY EDUCATION SCHEDULE

**HALF DAY SCHEDULE**  
8:00AM - 11:00AM



Drop Off: 7:40AM - 7:55AM  
Pick Up: 11:05AM - 11:20AM

**FULL DAY SCHEDULE**  
8:00AM - 2:30PM



Drop Off: 7:40AM - 7:55AM  
Pick Up: 2:35PM - 2:50PM

### SAFETY AND FLEXIBILITY FOR FAMILIES

#### Before Care Available

For added convenience, children can be dropped off at the Main Campus between 7:00 and 7:30 AM, with transportation to the North Campus provided at no extra cost.

#### After Care Program

An After Care option is available for full-day students, ensuring a seamless transition for families needing extended care, with fees billed monthly.

# ELEMENTARY SCHOOL

## (KINDERGARTEN - GRADE 4)



### WHERE FIRST STEPS FLOURISH

Lakewood Park Christian School values a holistic education blending academic rigor and Christian values. The Elementary School program aims to develop well-rounded learners in academics, social skills, emotions, and spirituality while preserving the joy of childhood.

**OUR APPROACH** From Kindergarten through Grade 4, these formative years lay the groundwork for a lifetime of learning. Our curriculum is crafted to establish deep roots in core subjects while sparking creativity through art, music, and interdisciplinary studies.

### ACADEMIC ADVANCEMENT

#### Smaller Class Sizes

Personalized attention ensures each child's unique learning path is recognized and nurtured.

#### Learning through a Biblical Lens

Promoting a growth mindset and Christian principles while highlighting God's involvement in all subjects.

#### Beyond State Standards

Our curriculum exceeds state standards, offering a 21st-century learning experience based on a biblical worldview.

### COMMUNITY & CHARACTER

#### Weekly Chapel & Bible Buddies

Mentoring programs like Bible Buddies and Reading Buddies foster leadership and community spirit through spiritually enriching experiences.

#### Service Projects & Mentorship

Service initiatives and leadership roles help students learn the importance of serving others and being role models in and outside of school.

### ENRICHMENT & EXPERIENCES

*Our vibrant enrichment programs and experiential learning opportunities include:*

#### Creative Arts & Physical Education

Our students participate in various activities including music, art, physical education, and junior achievement programs.

#### Real-World Learning

Field trips to Science Central, Fort Wayne Children's Zoo, and The Maple Syrup Experience with Dr. Burris provide hands-on learning and real-world applications beyond the classroom.



# MIDDLE SCHOOL

## (GRADES 5-8)



### WHERE STUDENTS ARE KNOWN, NOT A NUMBER

Lakewood Park Christian School's middle school program embraces the unique challenges and opportunities of grades 5 through 8, guiding students through a transformative journey of academic rigor, personal growth, and spiritual exploration.

**OUR APPROACH** We provide a nurturing environment where students learn to balance rigorous courses, extracurricular activities, and new friendships, all while discovering their unique talents and beginning to discern God's calling in their lives.

### ACADEMIC ADVANCEMENT

#### Diverse Curriculum

Students can take core subjects and various electives, like Band and Visual Arts, for high school credit.

#### Project-Based Learning

Our literacy-focused curriculum incorporates hands-on projects, promoting engagement across all subjects.

### ENRICHMENT OPPORTUNITIES

#### Broad Electives and Clubs

From Performing Arts to STEM and inclusive sports teams, students have ample opportunities to explore interests and develop new skills.

#### Experiential Learning

Field trips and unique experiences like The Maple Syrup Experience enhance the academic program, providing real-world learning opportunities.

**In these crucial years, Lakewood Park Christian School supports middle schoolers in becoming confident, independent learners and compassionate leaders, ready for the challenges of high school and beyond.**

### COMMUNITY & CHARACTER

#### Spiritual Growth

Weekly chapel services, mentor teams, and small group meetings offer spiritual guidance for students to apply Christian principles in daily life.

#### Personal Development

Life skills, academic independence, and a Christ-centered approach to respecting oneself and others prepare students for the future.



# HIGH SCHOOL

## COLLEGE PREP. LIFE READY.



Lakewood Park Christian School's High School program focuses on academic excellence, spiritual growth, and character development to prepare students for college and life's challenges.

### ACADEMIC ADVANCEMENT

#### Advanced Coursework

Students can take various advanced courses in fields such as Engineering, Health Sciences, Criminal Justice, English, Communications, Psychology, and Social Work.

#### University Partnerships

We partner with universities such as Purdue University-Fort Wayne, Trine University, Ball State University, and Indiana Tech to offer Dual-Credit courses for students to earn college credits and prepare for higher education.

#### Focused Diploma Tracks

Tailored tracks allow students to dive deeper into their areas of interest, mirroring the specialization of college majors and helping students define their career paths early.

### CHARACTER AND COMMUNITY

#### Service Learning

Our students learn the value of giving back and develop a lifelong habit of service by completing over 100 hours of community service.

#### Leadership Opportunities

Students are encouraged to develop leadership skills and a sense of responsibility through roles in student council, Christian leadership programs, and mentorship initiatives.

#### Spiritual Growth

Weekly chapel services, mentor teams, and small group meetings offer spiritual guidance for students to apply Christian principles in daily life.

### ENRICHMENT OPPORTUNITIES

#### Extracurricular Activities

A variety of sports teams, arts programs, clubs, and technology and worship teams offer students opportunities to explore and develop talents and interests.

#### Internship Program

Our internship program collaborates with local businesses and organizations to provide students with hands-on experience, aiding in career exploration and network development.

#### Global Learning Opportunities

Students can earn academic credits and practical insights by participating in global learning experiences in places like London and the Grand Canyon, focusing on subjects like science and history.



# LAKEWOOD PARK ATHLETICS




## RUNNING THE RACE TO WIN

The Lakewood Park athletic program exists to glorify God by developing Christian character and excellence in its student-athletes through life-transforming experiences and opportunities. We believe athletics enable students to develop, enhance and use their God-given physical and mental gifts.


Opportunities are available for both individual and team participation. Athletics offer a unique and effective environment to learn some of life's most valued lessons. These can include sacrifice, diligence, perseverance, respect, and putting the good of the group ahead of what is good for oneself.

## TEAMS




### FALL SPORTS

-  Cross Country
-  Soccer
-  Volleyball

### WINTER SPORTS

-  Boys Basketball
-  Girls Basketball
-  Cheerleading

### SPRING SPORTS

-  Baseball & Softball
-  Tennis
-  Track & Field



24

COMPETITIVE  
TEAMS



35

ATHLETIC  
TITLES



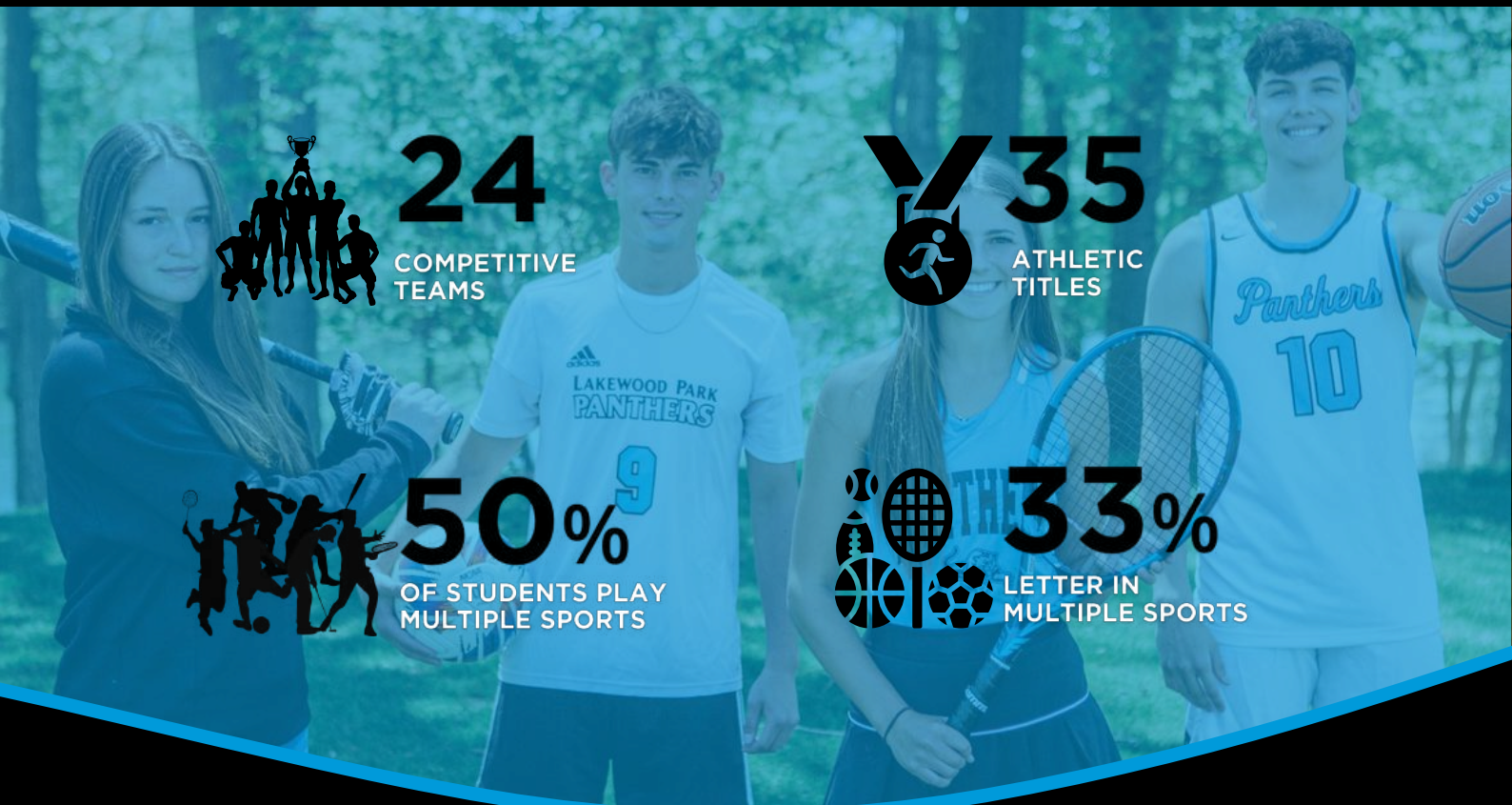
50%

OF STUDENTS PLAY  
MULTIPLE SPORTS



33%

LETTER IN  
MULTIPLE SPORTS





# WHAT DOES A LAKEWOOD PARK GRAD LOOK LIKE?



A Lakewood Park Christian School graduate embodies academic excellence, spiritual depth, and community engagement, prepared to make a difference with their knowledge, faith, and character.

## INVESTED IN COMMUNITY



Graduates value relationships while living selflessly and authentically with others.

## EQUIPPED TO LEAD



Graduates act with integrity and discernment in order to make a difference in the world around them.

## GROUNDING IN WISDOM



Graduates possess the skills and knowledge to think critically, problem-solve efficiently, and grow from life experiences.



## ENGAGED IN DISCIPLESHIP

Graduates desire to live biblically as they grow in their personal relationship with Jesus Christ alongside others.



## COMMITTED TO SERVE

Graduates utilize their time, talents, and treasure to serve within their church and community.



## LPCS PORTRAIT OF A GRADUATE

### SELECTED UNIVERSITIES AND COLLEGES OUR GRADUATES ATTEND:

- Anderson University (Indiana)
- Ball State University (Indiana)
- Baylor University (Texas)
- Belmont University (Tennessee)
- Bethel University (Indiana)
- Butler University (Indiana)
- Calvin University (Michigan)
- Cedarville University (Ohio)
- Cornerstone University (Michigan)
- Grace College (Indiana)
- Hope College (Michigan)
- Indiana Tech
- Indiana University
- Liberty University (Virginia)
- Michigan State University
- Moody Bible Institute (Illinois)
- Northwestern University (Illinois)
- Ohio State University
- Olivet Nazarene University (Illinois)
- Palm Beach Atlantic University (Florida)
- Purdue University-Fort Wayne
- Rose-Hulman Institute of Technology (Indiana)
- Samford University (Alabama)
- Southeastern University (Florida)
- Taylor University (Indiana)
- Trine University (Indiana)
- University of Chicago (Illinois)
- University of Illinois at Urbana-Champaign
- University of Michigan
- University of Notre Dame (Indiana)
- Vanderbilt University (Tennessee)
- Wheaton College (Illinois)

# BEYOND THE CLASSROOM

At Lakewood Park Christian School, our students have the opportunity to explore the world through a variety of educational trips, enriching their learning experience and broadening their perspectives. Here's a brief overview of the memorable journeys we've embarked on:



## England and Scotland Exploration

Led by Dr. Burris, students visited iconic sites like the Tower of London, Westminster Abbey, Stonehenge, and castles including Windsor, Alnwick, and Edinburgh. They immersed themselves in the rich history, culture, and everyday life of the UK.



## American History Tour in the Nation's Capital

Rising eighth and ninth graders, guided by Gramm Wilson, explored historical landmarks in Washington D.C., including Gettysburg, Arlington National Cemetery, and various national memorials, deepening their appreciation for American heritage and the sacrifices for freedom.

## UPCOMING TRIPS

### Midwest Passport (Summer 2024)

An upcoming journey designed to explore the diverse history and culture within the heart of America.

### Europe Trip (Summer 2025)

Planned exploration of Europe, aiming to delve into its ancient history, art, and modern-day dynamics.

These trips are part of our commitment to enhancing students' education outside the classroom, fostering a deeper understanding of the world, and inspiring a love for learning and exploration.



# INVESTING IN YOUR CHILD'S SCHOOL EDUCATION

Choosing the right school is crucial for shaping a child's future. Lakewood Park Christian School in Northeast Indiana offers quality Christian education from Early Education to High School, focusing on academics, spiritual development, independent thinking, and leadership skills.

## LPCS TUITION

\$8,055 - \$9,161

\*Dependent on grade level

## OUT-OF-POCKET EXPENSES

SGO SCHOLARSHIP  
\$500

\*Avg. student pays \$250 per month with a Choice Scholarship

CHOICE SCHOLARSHIP  
\$6000

\*Based on school district of residency



## TUITION & FINANCIAL AID

### TUITION FOR PK3 & PK4:

	Half Day Tuition	Full Day Tuition	Resource Fee
2 Days a Week	\$1760	\$3200	\$250
3 Days a Week	\$2409	\$4796	\$250
5 Days a Week	\$3635	\$6807	\$250

### TUITION FOR GRADES K-12:

		Resource Fee
Grades K-4	\$8055	\$350
Grades 5-8	\$8578	\$400
Grades 9-12	\$9161	\$450

### APPLICATION & ENROLLMENT FEES:

Application Fee New Student	\$100	Enrollment Fee Current Student (1/12-1/22)	\$100
Enrollment Fee New Student	\$150	Enrollment Fee Current Student	\$150

*Written notice is required for a mid-year withdrawal. Tuition is pro-rated to the month attended. Scholarships are reduced in accordance with the program rules. Fees are not pro-rated. Replacement fees will be charged for all school property not returned in good condition within one week of withdrawal. Academic records will be forwarded after financial balances are paid in full.*

**\$3.6 million**

awarded in scholarships  
2023-24 school year

**89%** of our students

receive financial aid  
2023-24 school year

## PAYMENT OPTIONS

### 1 Pay in full

- Tuition and resource fee
- Due on or before June 3rd

### 2 Ten monthly installments

- August through May
- Required for scholarship recipients

## FINANCIAL ACCESSIBILITY AND SUPPORT

### Indiana Choice Scholarship Program

Recent changes in Indiana law expand eligibility for the Choice Scholarship Program, offering potential tuition savings of over \$6,100 for Allen County and \$6,300 for Dekalb County residents.

### Income Guidelines

The program's income guidelines now include households of various sizes, allowing those from a 2-person household earning up to \$151,256 to an 8-person household earning up to \$390,128 to participate.

### Scholarship Estimates by District

Scholarships vary by school district, with amounts detailed for districts such as East Allen County Schools, Fort Wayne Community Schools, and several others within Dekalb County.





# DISCOVER LAKEWOOD PARK CHRISTIAN SCHOOL

*SCHEDULE YOUR TOUR TODAY*

When it comes to finding the best school for your child, you shouldn't have to choose between Christian education and academic rigor. At Lakewood Park, we are committed to providing students with a tailored-fit education where they are truly seen and supported by a community that shares the values you are instilling in your home. This way, each child is fully supported to reach their absolute best academically and spiritually.



## PLAN YOUR VISIT IN THREE SIMPLE STEPS:

1

**Connect With Us:** Schedule your tour to experience the nurturing, academically challenging environment that defines Lakewood Park Christian School.

2

**Explore Your Options:** Reflect on your visit with your family to determine the best educational path for your child, ensuring alignment with values and aspirations.

3

**Engage With Our Community:** Following your visit, our admissions team is ready to assist with any questions or guide you through the application process at your own pace.

## CONTACT US

Lakewood Park Christian Schools  
5555 Co Rd 29, Auburn, IN  
Phone: 260-925-1393  
Email: [admissions@lakewoodpark.org](mailto:admissions@lakewoodpark.org)  
Website: [www.lakewoodparkchristianschool.com](http://www.lakewoodparkchristianschool.com)

